



## SISTERS COUNTRY TRAIL GUIDE



### SUTTLE TIE TRAIL

**Length:** 5 miles  
**Elevation High:** 3438  
**Elevation Low:** 3239  
**Difficulty:** Easy  
**Setting:** Forest  
**Season:** Spring-Fall  
**Restrictions:** No motorized vehicles or ATVs

#### DIRECTIONS & TRAIL ACCESS:

Proceed west from Sisters on Hwy 20 for 12 miles. Continue past the first exit into Suttle Lake and turn left at the Suttle Lake Resort sign. The trail starts near a small footbridge that crosses Lake Creek.

#### DESCRIPTION:

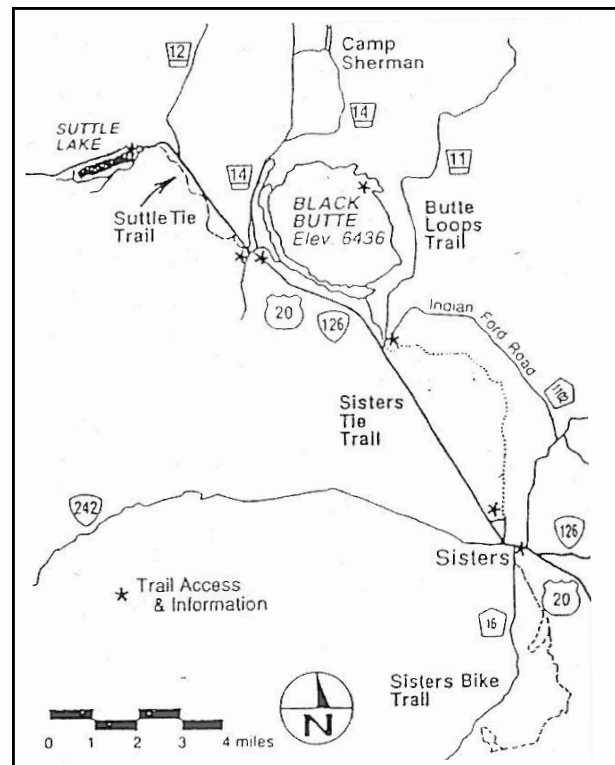
This trail can be started near Black Butte Ranch or at Suttle Lake. If starting at Suttle Lake you will travel through stands of Douglas fir and white fir as you proceed east. Within the first several miles you can expect the vegetation to change to a mix of Douglas fir and ponderosa pine with small patches of lodgepole pine. The terrain is gently rolling with the trail on a combination of old roads and single track. This trail connects to the trails in the Black Butte area and eventually travels into Sisters.

#### SPECIAL INTERESTS:

Most of the trails you will be riding on in the Black Butte area are part of a Roads to Trails Program. Portions of abandoned roads have been designated as trails and are being managed as part of our trail system.

#### COMMENTS:

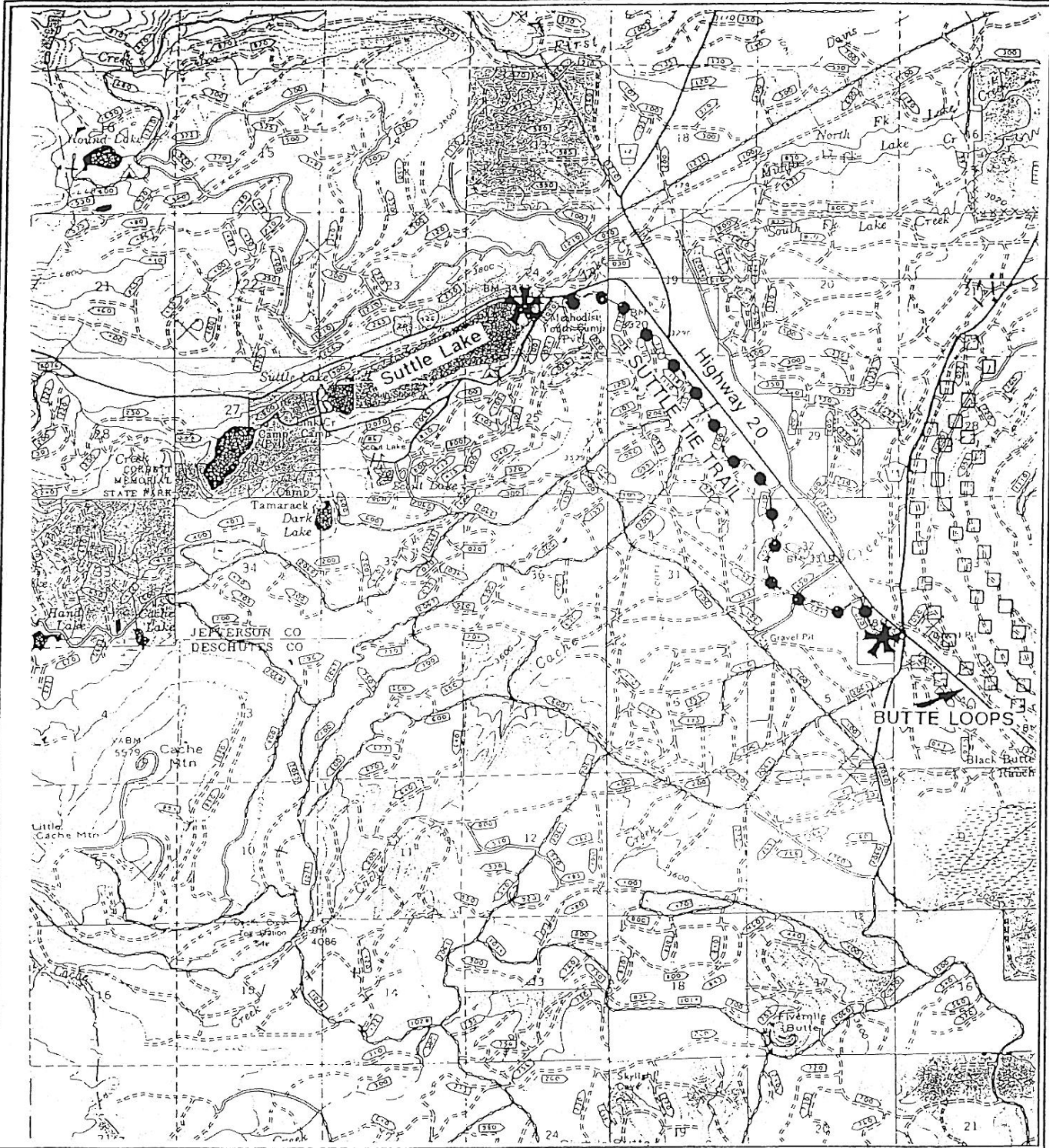
Bring plenty of liquids to drink because there is NO WATER along the trail. Use caution when approaching and crossing roads in the area.



*The*  
**SISTERS**  
*Country*

Sisters Area Chamber of Commerce  
291 East Main  
**541-549-0251**  
[www.thesisterscountry.com](http://www.thesisterscountry.com)

# SUTTLE TIE TRAIL



## SUTTLE TIE TRAIL



**LEGEND**  
 Trail  
 Trail Access & Information

Scale 1" = 1 mi.  
 Date 05/19/94 krm

Contour Interval 80 ft